

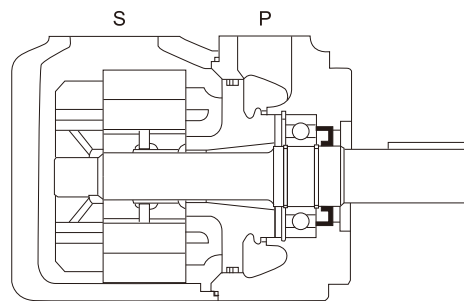
## T6 Series - Single Pumps

### Shape and introduction

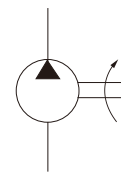
High pressure and high performance dowel pin type vane pumps are widely used for plastic machinery, casting machinery, metallurgy machinery, pressing machinery, refining machinery, construction machinery, marine-Machinery.

The main features are:

1. With dowel pin vane structure, it can work in high pressure, low noise and long lifetime.
2. This vane pump can fit wide viscosity hydraulic medium and be started at low temperature and work at high temperature.
3. As the vane pump adopts bilabial structure vane, it has high oil pollution resistance and wide speed scope.



Hydraulic signs



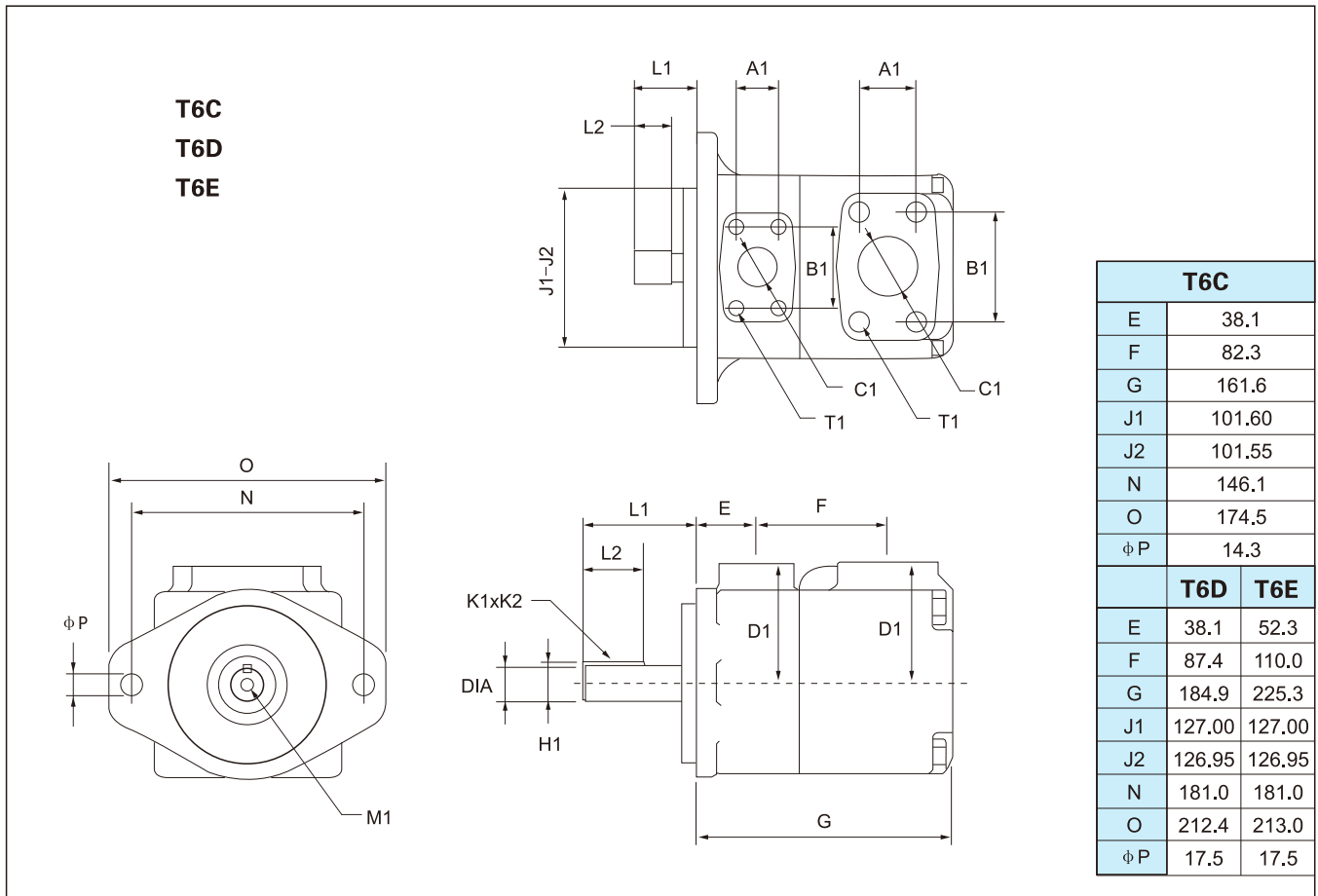
### Model descriptions:

T6C	-17	-1	R	00	-A	1
Code of series	Flow code	Shaft type	Direction of rotation	Outlet Positions	Designing No.	Sealing Level
T6C	03、05、06、08、10、12、14、17、20、22、25、28、31	See of shaft	(viewed from shaft end of pump)	(viewed from shaft end of pump)	A	1-S1 Nitrile rubber
T6D	14、17、20、24、28、31、35、38、42、45、50、61		R-right hand for clockwise	00-Opposite inlet port 01-Inline with inlet		5-S5 Fluororubber
T6E	42、45、50、52、57、62、66、72、85		L-left hand for counter clockwise	90° CCW from inlet 90° CW from inlet		

## Technical parameters

series	Flow code (USgpm)	Geometric displacement mL/r	Max. pressure Mpa						Max. speed r/min		Min speed r/min
			Antiwear hydraulic oil		General hydraulic oil or phosphate eater fluid		Water glycol fluid or water-oil emulsions		General hydraulic oil or antiwear hydraulic oil	Water glycol fluid or phosphate eater fluid or water-oil emulsions	
			Instant	Continuous	Instant	Continuous	Instant	Continuous			
T6C	03	10.8	28	24.5	21	17.5	17.5	14	2800	1800	600
	05	17.2									
	06	21.3									
	08	26.4									
	10	34.1									
	12	37.1									
	14	46.0									
	17	58.3									
	20	63.8									
	22	70.3									
	25	79.3									
	28	88.8	21	16		16			2500		
	31	100.0									
T6D	14	47.6	24.5	21	21	17.5	17.5	14	2500	1800	600
	17	58.2									
	20	66.0									
	24	79.5									
	28	89.7									
	31	98.3									
	35	111.0									
	38	120.3									
	42	136.0									
	45	145.7									
		50	158.0	21	16		16			2200	
	61	190.5	12	8	8	8	8	8			
T6E	42	132.3	24.5	21	21	17.5	17.5	14	2200	1800	600
	45	142.4									
	50	158.5									
	52	164.8									
	57	179.8									
	62	196.7									
	66	213.3									
	72	227.1									
	85	269.0	9	7.5	7.5	7.5	7.5	7.5	2000		

Installation Dimensions

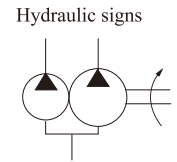
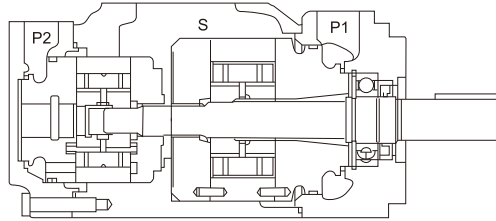


Model	Shaft code	Max torque (N. m)	L1	L2	DIA	K1xK2	H1	M1
T6C	1	275	71.4	38.1	22.225/22.200	6.35x6.30	24.95	M8x16
	2	238	58.2	31.7	22.225/22.200	4.76x4.71	24.53	—
	3	343	40.7	24.5	SAE J498b 1class, 16/32 DP, 13 T			—
	4	●	45.5	24.5	SAE J498b 1class, 16/32 DP, 15 T			—
T6D	1	●	83.6	49.3	31.750-31.700	7.94x7.89	35.27	M10x20
	2	577	73.2	38.1	31.750-31.700	7.94x7.89	35.27	—
	3	●	55.2	38.0	SAE J498b 1class, 12/24 DP, 14 T			—
	4	●	77.7	48.0	SAE J498b 1class, 12/24 DP, 14 T			—
T6E	1	●	90.9	50.8	38.100-38.050	9.52x9.47	42.36	M10x20
	2	577	61.9	38.1	31.750-31.700	7.94x7.89	35.27	—
	3	●	55.2	38.0	SAE J498b 1class, 12/24 DP, 14 T			—
	4	●	62.2	31.5	SAE J498b 1class, 12/24 DP, 17 T			—

●work at maximum flow and pressure.

oil port			Flange	Install Dimensions(mm)				
				A1	B1	φ C1	D1	T1 Thread
T6C	P	1"	F08	26.2	52.4	25.4	76.2	3/8"-16UNCx19.0
	S	1-1/2"	F12	35.8	70.0	38.1	76.2	1/2"-13UNCx22.4
T6D	P	1-1/4"	F10	30.2	58.7	31.8	82.6	7/16"-14UNCx22.3
	S	2"	F16	42.9	77.8	50.8	82.6	1/2"-13UNCx23.9
T6E	P	1-1/2"	F12	35.7	69.8	37.1	98.6	1/2"-13UNCx23.4
	S	3"	F24	61.9	103.4	75.0	98.6	5/8"-11UNCx24.0

T6 Series - Double Pumps



Model descriptions

T6CC	-25	-17	-1	R	02	-C	1	10
Series	Flow-shaft and Pump	Flow-cover end Pump	Shaft type	Rotation	port Positions	Design number	Sealing Level	Port dimensions
T6CC	03, 05, 06, 08, 10, 12, 14, 17, 20, 22, 25, 28, 31	03, 05, 06, 08, 10, 12, 14, 17, 20, 22, 25, 28, 31	See of shaft	(viewed from shaft end of pump)	see picturs below	C	1-S1 Nitrile rubber 5-S5 Fluororubber	00, 01, 10, 11, See installation dimensions
T6DC	14, 17, 20, 24, 28, 31, 35, 38, 42, 45, 50, 61	03, 05, 06, 08, 10, 12, 14, 17, 20, 22, 25, 28, 31		right hand for clockwise				no options
T6EC	42, 45, 50, 52, 57, 62, 66, 72, 85	03, 05, 06, 08, 10, 12, 14, 17, 20, 22, 25, 28, 31		left hand for counter-clockwise				
T6ED	42, 45, 50, 52, 57, 62, 66, 72, 85	14, 17, 20, 24, 28, 31, 35, 38, 42, 45, 50, 61						

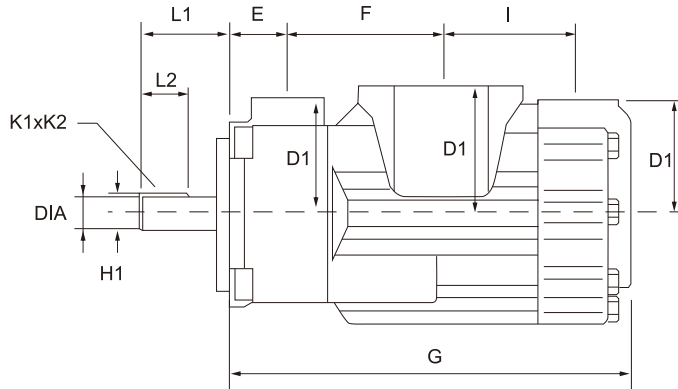
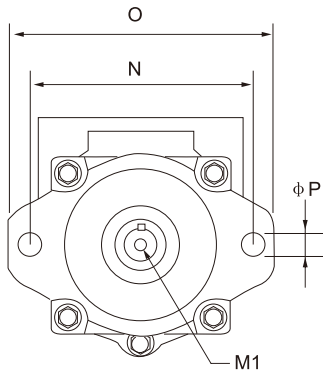
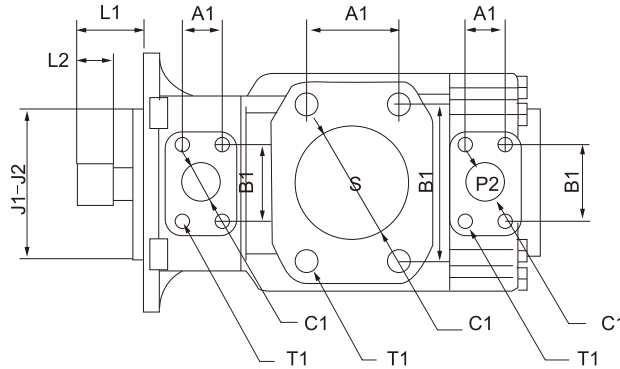
Specification is as the same as similar single pump, please refer to Page T6 single pump specification.

Port positions(Viewes from shaft end of pump)

<b>T6CC, T6DC, T6EC</b>	00 P1-P2	01 P1-P2	02 S-P1-P2	03 P1-P2	04 P1	05 P1	06 P1	07 P1-S
	08 P1-S	09 P1-S	10 P1	11 P1	12 P1	13 P1	14 P1	15 P1
	16 P1-P2	17 P1-P2	18 P1	19 P1	20 P1	21 P1	22 P1	23 P1
	24 P1-S	25 P1-S	26 P1-S	27 P1-S	28 P1	29 P1	30 P1	31 P1
<b>T6ED</b>	16 P1-P2	01 P1-P2	02 S-P1-P2	03 P1-P2	03 P1	05 P1	06 P1	07 P1-S
	08 P1-S	09 P1-S	10 P1	11 P1	12 P1	13 P1	14 P1	15 P1

Installation Dimensions

T6CC  
T6DC  
T6EC  
T6ED

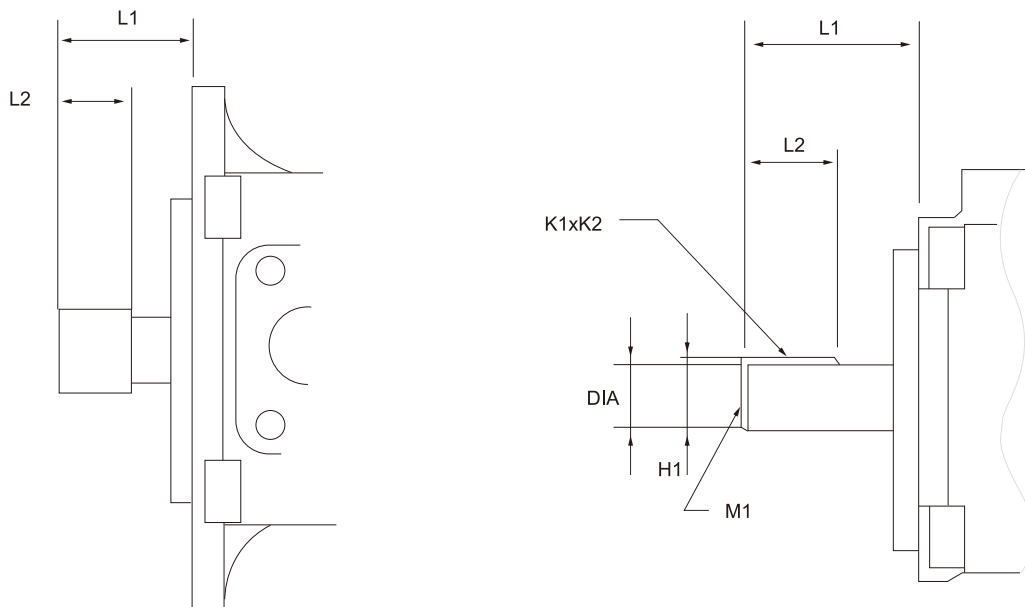


T6CC	
E	38.1
F	101.6
G	265.6
1	88.2
J1	101.60
J2	101.55
N	148.0
O	174.5
φP	14.3
T6DC	
E	38.1
F	114.3
G	286.0
1	109.5
J1	127.00
J2	126.95
N	181.0
O	215.4
φP	17.5
T6EC	
E	52.3
F	118.5
G	331.6
1	136.7
J1	127.00
J2	126.95
N	161.0
O	213.0
φP	17.5
T6ED	
E	52.3
F	133.5
G	361.0
1	148.0
J1	127.00
J2	126.95
N	181.0
O	213.0
φP	17.5

oil port			Flange	Dimensions (mm)				
				A1	B1	φ C1	D1	T1 Thread
								UNC
T6CC	P1	1"	F08	26.2	52.4	25.4	76.2	3/8"-16UNCx19.0
	P2	01-11:3/4"	F06	22.2	47.7	19.0	76.2	3/8"-16UNCx19.0
		00-10:1"	F08	26.2	52.4	25.4	74.7	
T6DC	S	10-11:2-1/2"	F20	50.8	88.9	63.5	84.1	1/2"-13UNCx23.9
	P1	00-01:3"	F24	61.9	106.4	76.2	84.1	5/8"-11UNCx28.4
		1-1/4"	F10	30.2	58.7	31.8	82.6	
T6EC	P2	1"	F08	26.2	52.4	25.0	74.7	3/8"-16UNCx19.0
	S	3"	F24	62.0	106.4	76.0	88.9	5/8"-11UNCx28.4
	P1	1-1/2"	F12	35.7	69.8	37.1	98.4	1/2"-13UNCx23.4
T6ED	P2	1"	F08	26.2	52.4	25.0	74.7	3/8"-16UNCx19.0
	S	3-1/2"	F28	69.9	120.6	88.9	102.4	5/8"-11UNCx28.4
	P1	1-1/2"	F12	35.7	69.8	37.1	98.4	1/2"-13UNCx23.4
T6ED	P2	1-1/4"	F10	30.2	58.7	29.5	101.6	7/16"-14UNCx24.0
	S	4"	F32	77.8	130.2	101.6	102.4	5/8"-11UNCx30.0

## Installation Dimensions

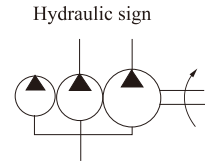
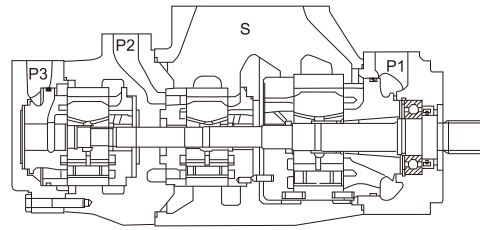
## T6CC、T6DC、T6EC、T6ED



Model	Shaft code	Max torque (N. m)	L1	L2	DIA	K1xK2	H1	M1
T6CC	1	238	58.2	31.7	22. 225/22. 200	4.76x4.71	24.53	—
	2	357	71.4	38.1	25.4/25.370	6.35x6.30	28.22	M8x16
	3	545	45.5	25.5	SAE J498b 1class, 16/32 DP, 15T		—	—
	4	343	40.7	24.5	SAE J498b 1class, 16/32 DP, 13 T		—	—
T6DC	1	721	83.6	49.3	31. 750–31. 700	7.94x7.89	35.27	M10x20
	2	577	73.2	38.1	31. 750–31. 700	7.94x7.89	35.27	—
	3	●	55.7	38.0	SAE J498b 1class, 12/24 DP, 14T		—	—
	4	●	77.7	48.0	SAE J498b 1class, 12/24 DP, 14T		—	—
T6EC、T6ED	1	●	90.9	50.8	38. 100–38. 050	9.52x9.47	42.36	M10x20
	2	577	61.9	38.1	31. 750–31. 700	7.94x7.89	35.27	—
	3	●	55.7	38.0	SAE J498b 1class, 12/24 DP, 14T		—	—
	4	●	62.2	31.5	SAE J498b 1class, 12/24 DP, 17T		—	—

●work at maxlimum flow and pressure.

T6 Series - Treble Pumps



型号说明

T6DCC	-42	-17	-10	-1	R	02	-A	1	01
Series	Flow-shaft and Pump	Flow-middle Pump	Flow-cover end Pump	Shaft type	Rotation	port Positions	Design unnumber	Sealing Level	Port dimensions
T6DCC	14、17、20、24、28、31、35、38、42、45、50、61	03、05、06、08、10、12、14、17、20、22、25、28、31	03、05、06、08、10、12、14、17、20、22、25、28、31	See of shaft	(viewed from shaft end of pump)	see pictures below	A	1-S1 Nitrile rubber  5-S5 Fluororubber	00、01、 See installation dimensions
T6DDCS	14、17、20、24、28、31、35、38、42、45、50、61	14、17、20、24、28、31、35、38、42、45、50、61	03、05、06、08、10、12、14、17、20、22、25、28、31		right hand for clockwise				
T6EDC T6EDCS	42、45、50、52、57、62、66、72、85	14、17、20、24、28、31、35、38、42、45、50、61	03、05、06、08、10、12、14、17、20、22、25、28、31		left hand for counter clockwise				

Port positions(Viewes from shaft end of pump)

T6DCC、T6DDCS、 T6EDC、T6EDCS	00	01	02	03	04	05	06	07

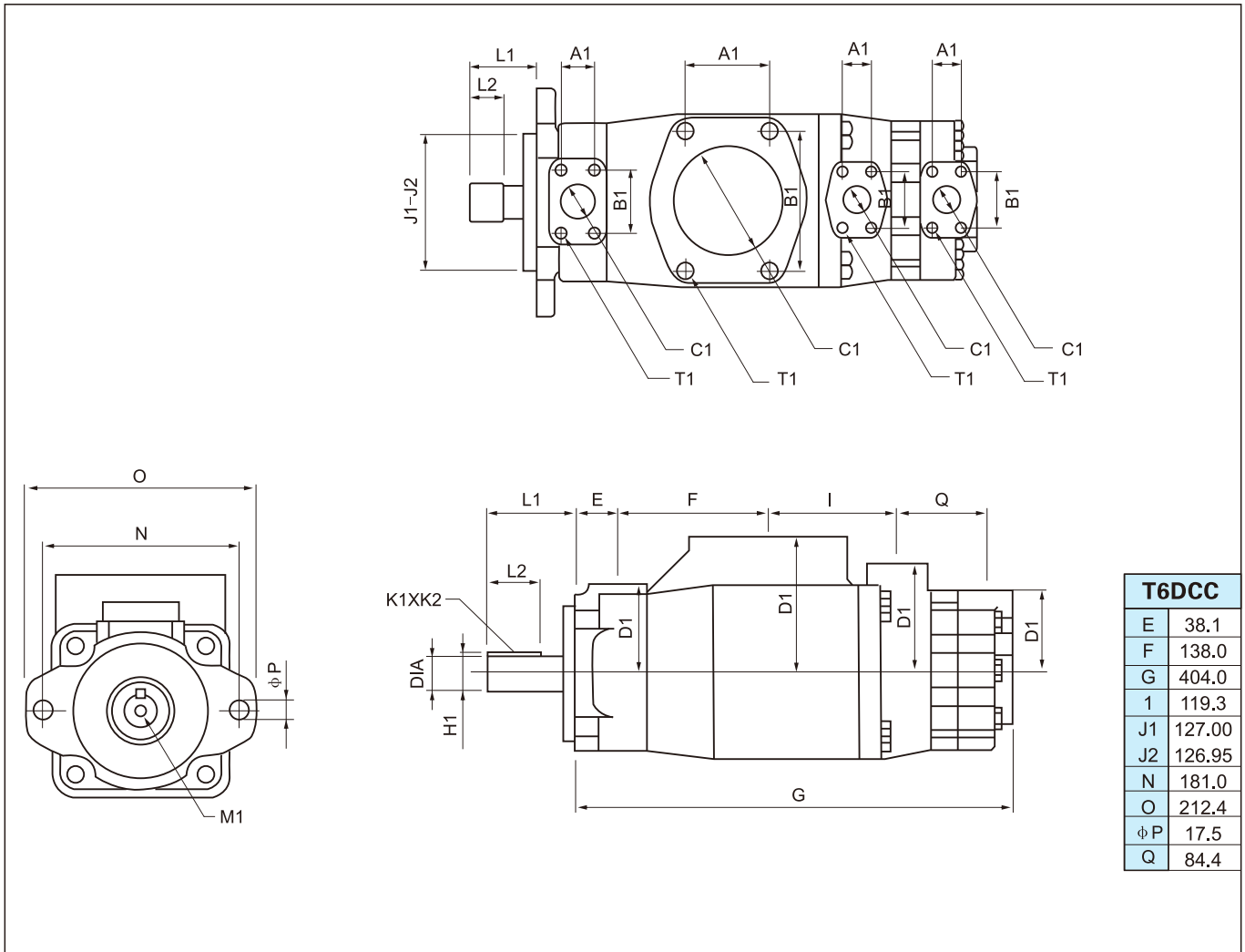
T6 Series - Treble Pumps

Port positions(Views from shaft end of pump)

<p><b>T6DCC、T6DDCS、 T6EDC、T6EDCS</b></p>	48	49	50	51	52	53	54	55
	56	57	58	59	60	61	62	63
	64	65	66	67	68	69	70	71
	72	73	74	75	76	77	78	79
	80	81	82	83	84	85	86	87
	88	89	90	91	92	93	94	95
	96	97	98	99	1A	1B	1C	1D
	1E	1F	1G	1H	1J	1K	1L	1M
	1N	1P	1R	1S	1T	1U	1V	1W
	1X	1Y	1Z	2A	2B	2C	2D	2E



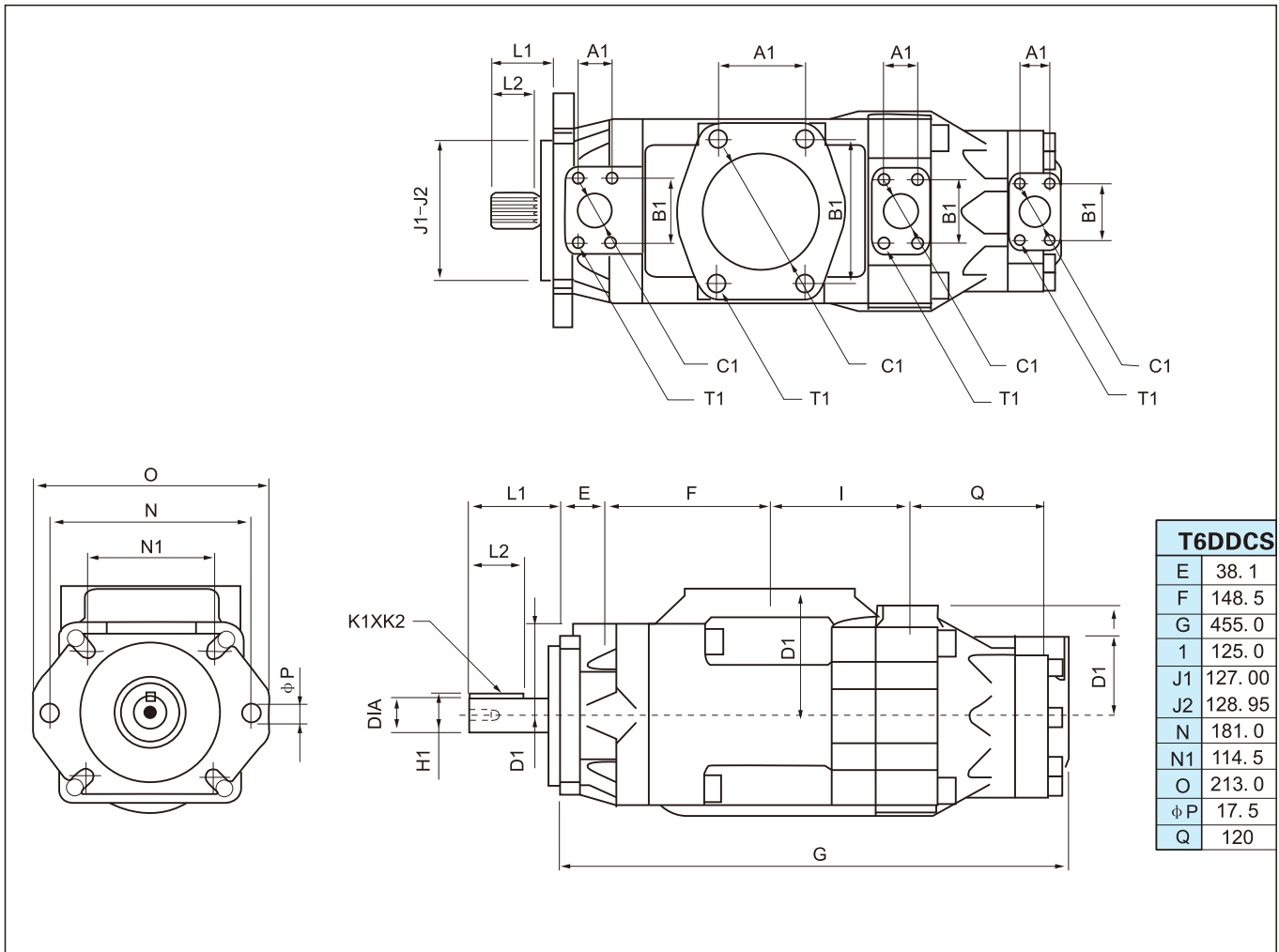
Installation Dimensions



Shaft code	Max torque (N. m)	Dimensions (mm)					
		T6DCC	L1	L2	DIA	K1xK2	H1
1 Straight key : No SAE ( φ 31)	721	83.6	49.3	31.750-31.700	6.35x6.30	34.6	
2 Straight key : SAE CC ( φ 38)	1108	89.7	50.8	38.100-38.075	9.52x9.47	42.4	
3 Spline : SAE C	●	55.2	38.0	SAE J498b 1class, 12/24 DP, 14T			
4 Spline : SAE C	●	61.0	31.5	SAE J498b 1class, 12/24 DP, 17T			
6 Spline : No SAE	●	76.0	48.0	SAE J498b 1class, 12/24 DP, 14T			

oil port	Dimensions (mm)						
	A1	B1	φC1	D1	T1 Thread		
					UNC		
T6DCC	P1	1-1/4"	30.2	58.7	31.8	82.6	7/16"-14UNCx22.3
	P2	1"	26.2	52.4	25.0	101.6	3/8"-16UNCx19.0
	P3	01: 3/4"	22.2	47.7	19.2	74.7	3/8"-16UNCx19.0
		00: 1"	26.2	52.4	25.4		
S	4"	77.8	130.2	101.6	127.0	5/8"-11UNCx30.0	

Installation Dimensions

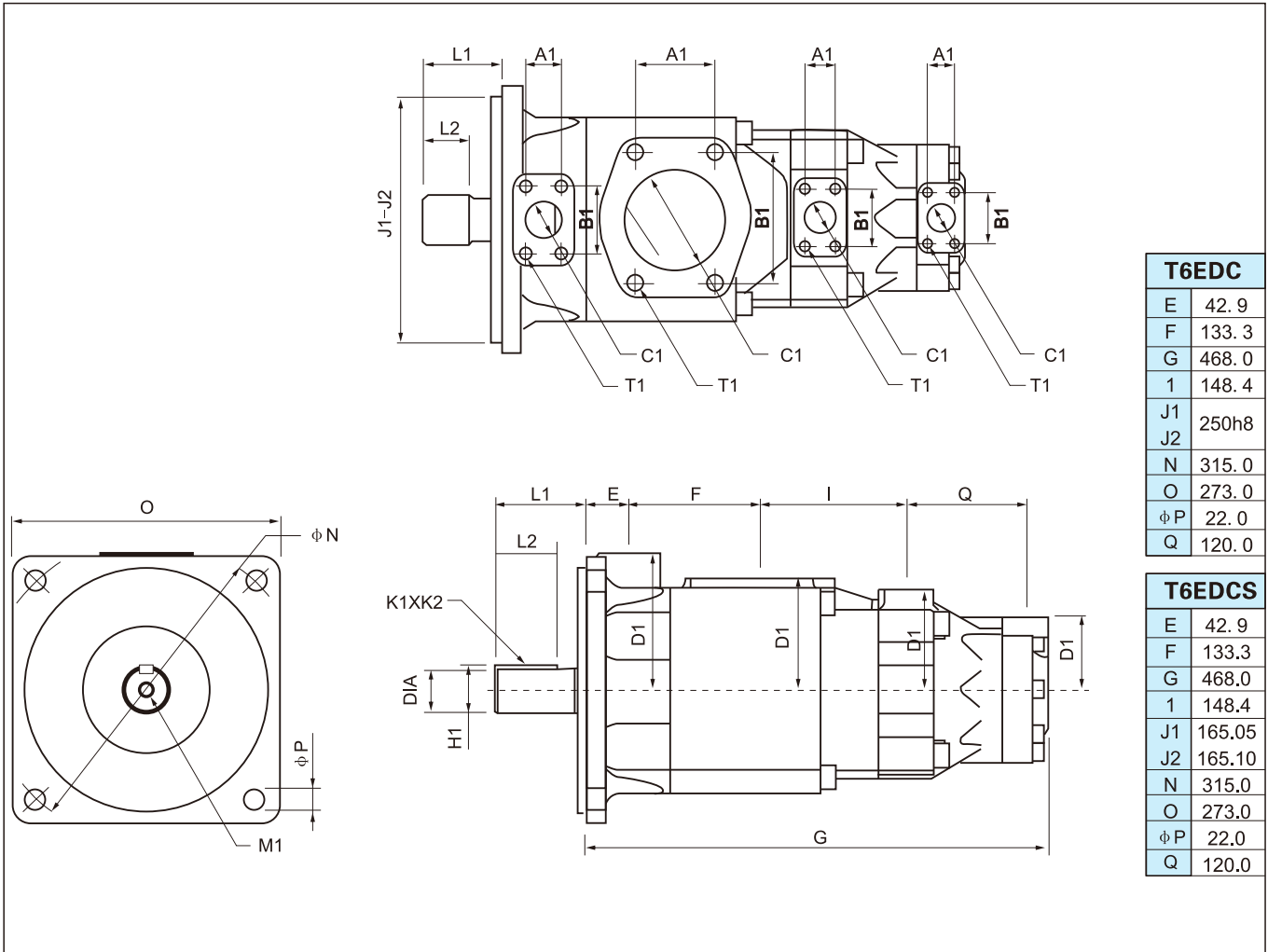


T6DDCS	
E	38.1
F	148.5
G	455.0
I	125.0
J1	127.00
J2	128.95
N	181.0
N1	114.5
O	213.0
ϕP	17.5
Q	120

Shaft code	Max torque (N. m)	Dimensions (mm)						
		T6DDCS	L1	L2	DIA	K1xK2	H1	M1
1 Straight key : SAE-C	686		84.0	49.3	31.750-31.700	7.94x7.89	35.27	M10x20
2 Straight key : SAE-CC	1148		91.0	50.8	38.100-38.075	9.52x9.47	42.36	M10x20
3 Spline: not SAE	883		84.0	60.0	34.900-34.850	7.94x7.89	38.42	M10x20
4 Spline: SAE-C	971		56.0	38.0	SAE J498b 1class, 12/24 DP, 14T			
6 Spline: SAE-CC	●		46.0	31.5	SAE J498b 1class, 12/24 DP, 17T			

oil port		Dimensions (mm)					
		A1	B1	ϕC1	D1	T1 Thread UNC	
T6DDCS	P1	1-1/4"	30.2	58.7	31.8	82.6	7/16"-14UNCx22.3
	P2	1-1/4"	30.2	58.7	31.8	101.6	3/8"-14UNCx24.0
	P3	01: 3/4" 00: 1"	22.2	47.7	19.0	74.7	3/8"-16UNCx19.0
	S	4"	77.8	130.2	101.6	115.0	5/8"-11UNCx30.0

Installation Dimensions



T6EDC	
E	42.9
F	133.3
G	468.0
1	148.4
J1	250h8
J2	250h8
N	315.0
O	273.0
phi P	22.0
Q	120.0

T6EDCS	
E	42.9
F	133.3
G	468.0
1	148.4
J1	165.05
J2	165.10
N	315.0
O	273.0
phi P	22.0
Q	120.0

Shaft code	Max torque (N. m)		Dimensions (mm)					
	T6EDC	T6EDCS	L1	L2	DLA	K1xK2	H1	M1
1 Straight key: No SAE (phi 31)	●	●	92.0	63.0	45h7	45h7	48.5	M12x24.0
2 Straight key: SAE CC (phi 38)		●	100.0	63.5	44.450—44.400	11.11x11.06	49.3	1/2"UNCx24.0
3 Spline : SAE C		●	75.0	75.0	SAE J498b 1class, 12/24 DP, 14T			

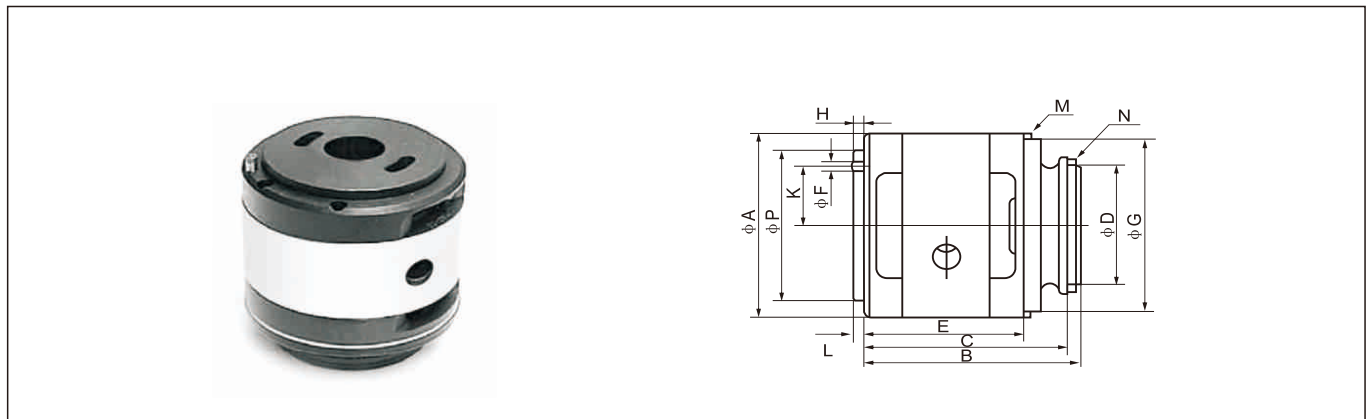
oil port			Dimensions (mm)				
			A1	B1	phi C1	D1	T1 Thread UNC
T6EDS T6EDCS	P1	1-1/2"	35.7	69.8	37.1	139.7	1/2"-13UNCx30.0
	P2	1/4"	30.2	58.7	31.8	101.6	7/16"-14UNCx24.0
	P3	01:3/4" 00:1"	22.2	47.7	19.0	74.7	3/8"-16UNCx19.0
	S	4"	77.8	130.2	101.8	115.0	5/8"-11UNCx30.0

## T6 Series - cartridge

## Model Descriptions:

Front pump cartridge	T6DC	-45	R	1
Cartridge name	Series	Flow code	Rotation	Sealing Level
Single pump cartridge	T6C, T6CC, T6DC, T6EC, T6DCC, T6DDCS, T6EDC (S)	03, 05, 06, 08, 10, 12, 14, 17, 20, 22, 25, 28, 31	(viewed from shaft end of pump) R- right hand for clockwise L- left hand for counterclockwise	1-S1, NBR seals  5-S5, FKM seals
Front pump cartridge				
Middle pump cartridge				
Rear pump cartridge	T6D, T6DC, T6ED, T6DCC, T6DDCS, T6EDC	14, 17, 20, 24, 28, 31, 35, 38, 42, 45, 50, 61		
	T6E, T6EC, T6ED, T6EDC (S)	42, 45, 50, 52, 57, 62, 66, 72, 85		

The data of relevant series, model are unanimous, please refer to Page T6 single pump specification.



Cartridge name	Sliding bearing diameter	φ A	B	C	φ D	E	φ F	φ G	H	K	M (Rubber washer)	N (Rubber washer)	φ P	L
Single pump cartridge T6C	φ 15.9													
Front pump cartridge T6CC	No sliding bearing	95.25	99.4	93.9	61.9	72.1	4.8	89.1	4.8	43.7	88.5x3.53	60x3.53	77.7	5.5
Rear pump cartridge T6CC, T6DCC, T6DDCS, T6EDC (S)	φ 19.05													
Rear pump cartridge T6DC T6EC	φ 22.225													
Middle pump cartridge T6DCC	No sliding bearing	95.25	83.4	77.3	52.6	\	4.8	\	4.8	43.7	89x2.4	52x2.4	77.7	5.5
Single pump cartridge T6D	φ 22.225	123.0	132.4	125.8	71.9	102.2	6.4	108.1	8.0	41.2	107.5x3.53	69.5x3.53	No step	
Front pump cartridge T6DCC														
Front pump cartridge T6DC T6DDCS	No sliding bearing													
Rear pump cartridge T6ED	φ 28.6	143.08	150.3	142.5	88.0	113.0	8.0	137.0	8.0	49.2	136.1x3.53	85.3x3.53		
Middle pump cartridge T6EDC (S)														
Middle pump cartridge T6DDCS	φ 22.225													
Single pump cartridge T6E	φ 28.6													
Front pump cartridge T6EC T6ED, T6EDC (S)	No sliding bearing													

Cartridge name	Inside spline tooth outline parameter of rotor				
	No. of teeth	Pitch	Standard angle	Major diameter	Minor diameter
Front pump cartridge T6CC Middle pump cartridge T6DCC	32	40/80	45°	21.41	19.9
Single pump cartridge T6C Rear pump cartridge T6CC T6DC, T6EC, T6DCC, T6DDCS, T6EDC (S)	28	40/80	45°	18.87	17.4
Single pump cartridge T6D Front pump cartridge T6DC, T6DCC, T6DDCS Middle pump cartridge T6EDC (S) Rear pump cartridge T6ED	25	24/48	45°	28.19	25.8
Middle pump cartridge T6DDCS	20	24/48	45°	22.89	20.5
Single pump cartridge T6E Front pump cartridge T6EC, T6ED, T6EDC (S)	34	24/48	45°	37.72	35.4